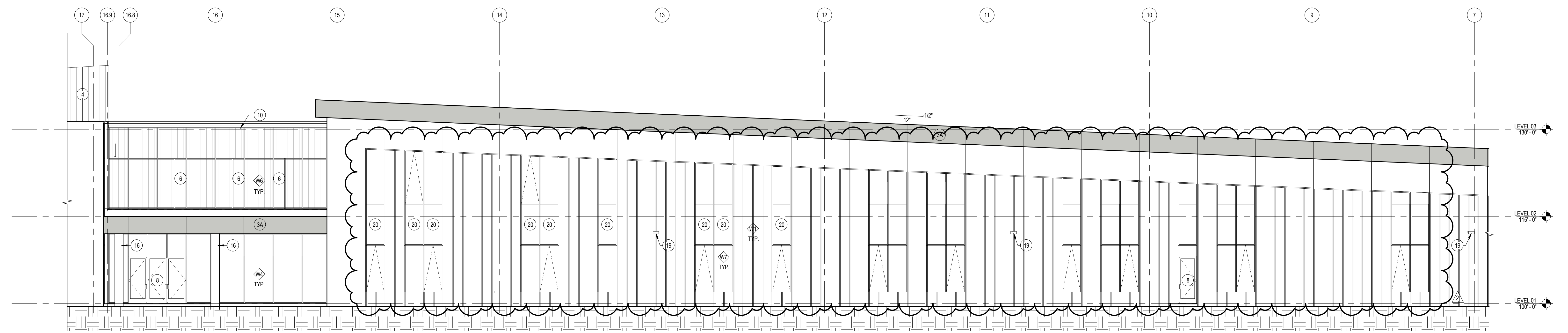
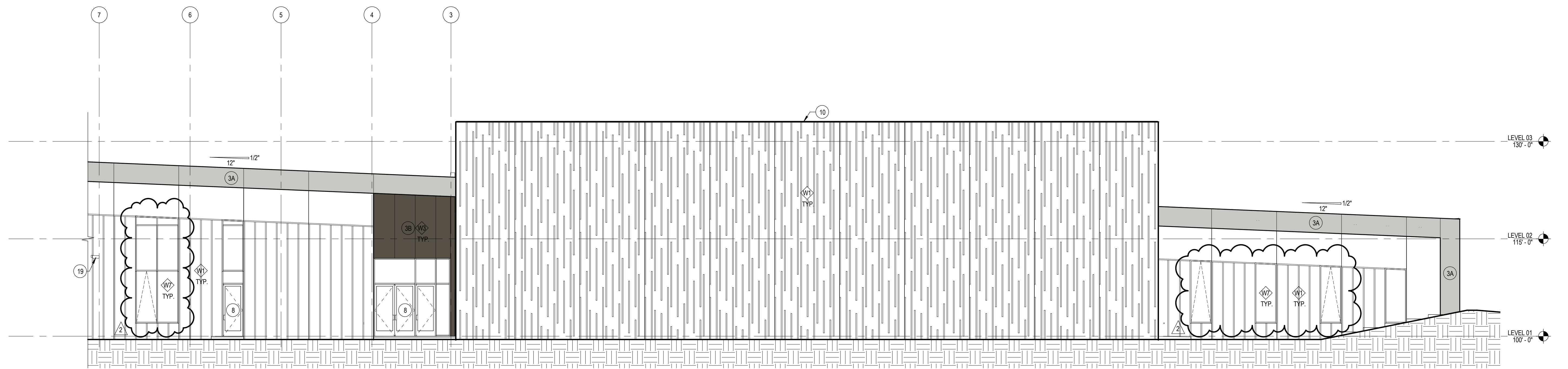


1 NORTH ELEVATION - AREA A
SCALE: 1/8" = 1'-0"



2 NORTH ELEVATION - AREA B
SCALE: 1/8" = 1'-0"



3 NORTH ELEVATION - AREA C
SCALE: 1/8" = 1'-0"

GENERAL NOTES

- A. SEE PRECAST PANEL ELEVATIONS FOR PANEL DIMENSIONS, JOINT LOCATIONS, REBAR LOCATIONS, AND FINISH DESIGNATIONS.
- B. FINISHES AND PRECAST MOUNTED DEVICES INDICATED IN THE PRECAST ELEVATIONS REPRESENT THE DESIGN INTENT. COORDINATE FINAL MECHANICAL, PLUMBING, ELECTRICAL, AND TECHNOLOGY FINISHES AND DEVICES IN THE FIELD.
- C. ALL GLASS TO BE TEMPERED, UNLESS NOTED OTHERWISE.
- D. SEE SHEET A7.0 FOR WALL TYPE DESCRIPTIONS.
- E. ALL PRECAST REVEALS TO BE 2" WIDE X 1/2" DEEP, UNLESS NOTED OTHERWISE.

KEYNOTES

- 1A. DARK PRECAST CONCRETE
PC1. ACID TONED
PC2. SAND-BLASTED
- 1B. EXTRA DARK PRECAST CONCRETE
PC3. SAND-BLASTED
- 2. LIGHT PRECAST CONCRETE
PC4. ACID TONED
PC5. SAND-BLASTED
- 3. PREFINISHED COMPOSITE METAL PANEL SYSTEM
3A. CHAMPAGNE METALIC FINISH
3B. GRAY VELVET METALIC FINISH
- 4. FORMED METAL SCREEN WALL PANEL
CENTRIA PROFILE SERIES M-40A, SILVER METALIC FINISH
- 5. DIRECT APPLIED EXTERIOR FINISH SYSTEM, S16676, DEFS1
- 6. INSULATED GLAZING UNIT WITH INSULATED TRANSLUCENT SANDWICH PANEL SYSTEM

- 7. PRE-FINISHED ALUMINUM FENCE AND GATE
- 8. CLEAR ANODIZED ALUMINUM ENTRY DOORS
- 9. HOLLOW METAL DOOR AND FRAME, PAINTED TO MATCH ADJACENT PRECAST PANEL
- 10. PRE-FINISHED ALUMINUM ROOF EDGE, CHAMPAGNE METALIC FINISH
- 11. CLEAR ANODIZED ALUMINUM ARCHITECTURAL LOUVER
- 12. 3/8" PIN MOUNTED CUT METAL LETTERS, ARIAL, DARK BRONZE ANODIZED FINISH
- 13. PRE-FINISHED INSULATED OVERHEAD GARAGE DOOR
- 14. RECESSED KNOX BOX, RECESSED, MODEL 3200
- 15. INTERCOM PANEL
- 16. GLASS FIBER REINFORCED CONCRETE COLLAR ENCLOSURE

- 17. ROOFTOP MECHANICAL UNITS BEYOND
- 18. CAST IN PLACE CONCRETE BENCH
- 19. BUILDING MOUNTED LIGHT FIXTURE, BOTTOM OF FIXTURE AT 12'-0" ABOVE FINISHED FIRST FLOOR, UNLESS NOTED OTHERWISE
- 20. 1" INSULATED SPANDREL GLASS
- 21. PAINTED PRECAST CONCRETE FINISH. SEE FINISH PLANS
- 22. 8" PRECAST CONCRETE FIREWALL
- 23. 8" PRECAST DIMSING WALL

LEGEND NOTES

ISSUED FOR CONSTRUCTION

Revisions
1 9/15/15 BRK ADDENDUM 1
2 2/26/15 PROPOSAL REQUEST #8

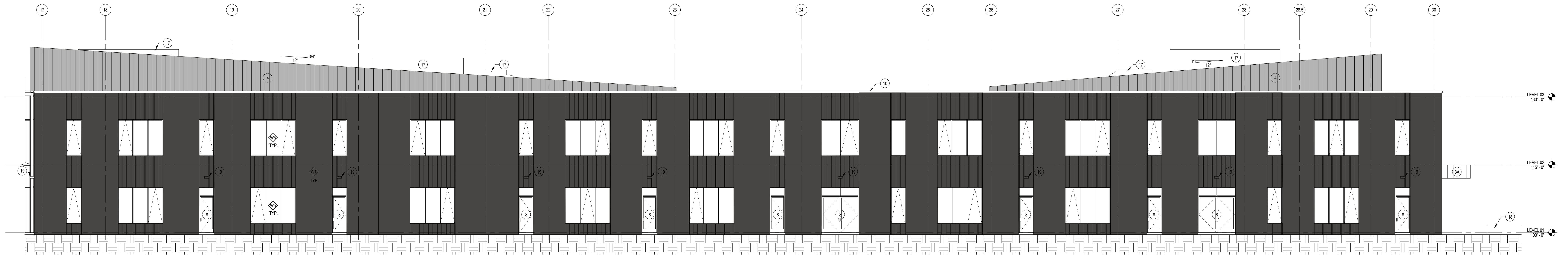
2075 21st Street West
Dickinson, North Dakota 58601

EXTERIOR ELEVATIONS
Dickinson Middle School

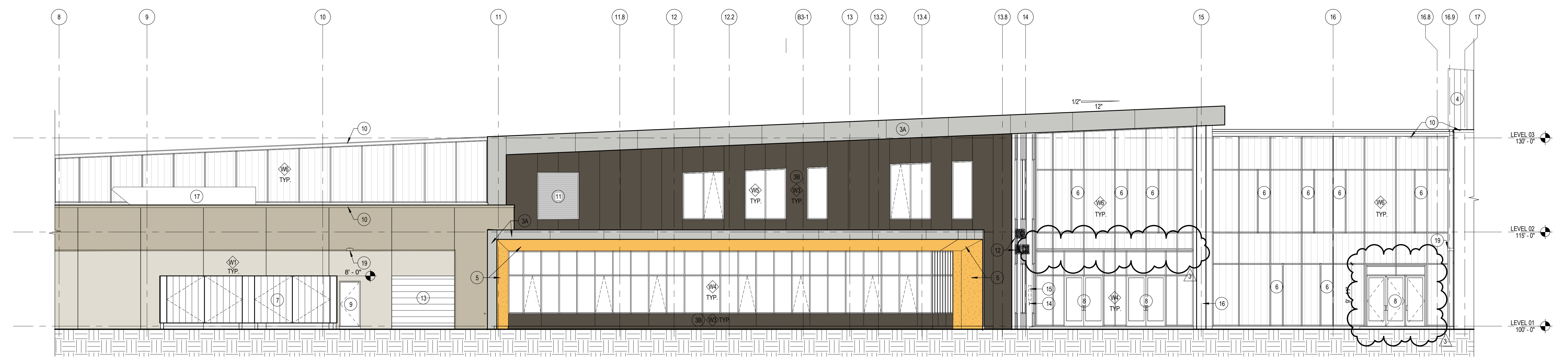
A5.1
21-14-105-00
10/20/15

I hereby certify that this plan, specification, or report was prepared by me or under my direct supervision and that I am a duly licensed architect under the laws of the State of North Dakota.
Thomas E. Gieseler
THOMAS E. GIESELER
Licenses No. 1285 Date: 02/20/15

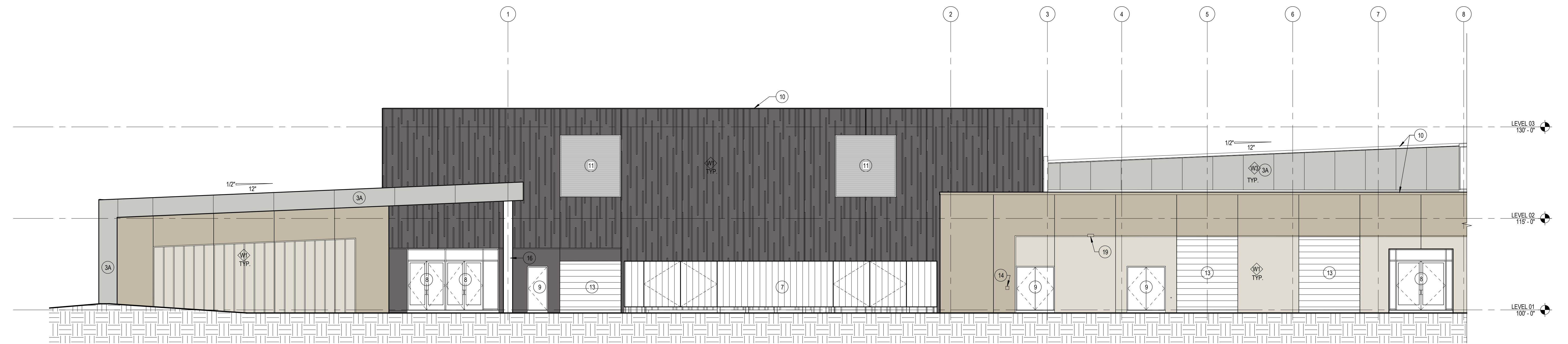
DLR Group
Architecture Engineering Planning Interiors
© 2015, DLR Group Inc. - a Minnesota corporation. ALL RIGHTS RESERVED



1 SOUTH ELEVATION - AREA A
A5.2 SCALE: 1/8" = 1'-0"



2 SOUTH ELEVATION - AREA B
A5.2 SCALE: 1/8" = 1'-0"



3 SOUTH ELEVATION - AREA C
A5.2 SCALE: 1/8" = 1'-0"

GENERAL NOTES:

- A. SEE PRECAST PANEL ELEVATIONS FOR PANEL DIMENSIONS, JOINT LOCATIONS, REBAR LOCATIONS, AND FINISH DESIGNATIONS.
- B. PENETRATIONS AND PRECAST MOUNTED DEVICES INDICATED IN THE PRECAST ELEVATIONS REPRESENT THE DESIGN INTENT. COORDINATE FINAL MECHANICAL, PLUMBING, ELECTRICAL, AND TECHNOLOGY PENETRATIONS AND DEVICES IN THE FIELD.
- C. ALL GLASS TO BE TEMPERED, UNLESS NOTED OTHERWISE.
- D. SEE SHEET A/J FOR WALL TYPE DESCRIPTIONS.
- E. ALL PRECAST REVEALS TO BE 2" WIDE X 1/2" DEEP, UNLESS NOTED OTHERWISE.

KEYED NOTES:

- 1A. DARK PRECAST CONCRETE
PC1 ACID TONED
PC2 SAND BLASTED
- 1B. EXTRA DARK PRECAST CONCRETE
PC3 SAND BLASTED
- 2. LIGHT PRECAST CONCRETE
PC4 ACID TONED
PC5 SAND BLASTED
- 3. PREFINISHED COMPOSITE METAL PANEL SYSTEM
3A. CHAMPAGNE METALLIC FINISH
3B. GRAY VELVET METALLIC FINISH
- 4. FORMED METAL SCREEN WALL PANEL
CENTRIA PROFILE SERIES W-40A, SILVER METALLIC FINISH
- 5. DIRECT APPLIED EXTERIOR FINISH SYSTEM, SW6876, DEF51
- 6. INSULATED GLAZING UNIT WITHIN INSULATED TRANSLUCENT SANDWICH PANEL SYSTEM

- 7. PRE-FINISHED ALUMINUM FENCE AND GATE
- 8. CLEAR ANODIZED ALUMINUM ENTRY DOORS
- 9. HOLLOW METAL DOOR AND FRAME, PAINTED TO MATCH ADJACENT PRECAST PANEL
- 10. PRE-FINISHED ALUMINUM ROOF EDGE, CHAMPAGNE METALLIC FINISH
- 11. CLEAR ANODIZED ALUMINUM ARCHITECTURAL LOUVER
- 12. 1/2" PIN MOUNTED CUT METAL LETTERS, ARIAL, DARK BRONZE ANODIZED FINISH
- 13. PRE-FINISHED INSULATED OVERHEAD GARAGE DOOR
- 14. RECESSED KONN BOX, RECESSED, MODEL 3200
- 15. INTERCOM PANEL
- 16. GLASS FIBER REINFORCED CONCRETE COLUMN ENCLOSURE

- 17. ROOFTOP MECHANICAL UNITS BEYOND
- 18. CAST IN PLACE CONCRETE BENCH
- 19. BUILDING MOUNTED LIGHT FIXTURE, BOTTOM OF FIXTURE AT 12'-0" ABOVE FINISHED FIRST FLOOR, UNLESS NOTED OTHERWISE
- 20. 1" INSULATED SPANDREL GLASS
- 21. PAINTED PRECAST CONCRETE FINISH. SEE FINISH PLANS
- 22. 8" PRECAST CONCRETE FIREWALL
- 23. 8" PRECAST DEMISING WALL

LEGEND NOTES

ISSUED FOR CONSTRUCTION

Revisions
1 9/15/15 BRP ADDENDUM 1
2 9/21/15 BRP ADDENDUM 2
3 2/26/16 PROPOSAL REQUEST #1

2075 21st Street West
Dickinson, North Dakota 58501

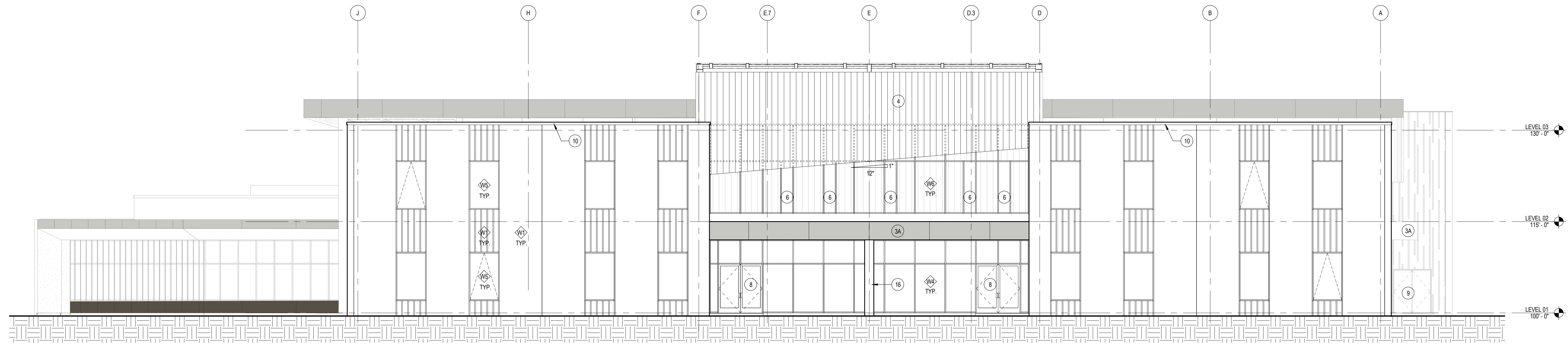
EXTERIOR ELEVATIONS
Dickinson Middle School

A5.2
21-14-105-00
10/20/15

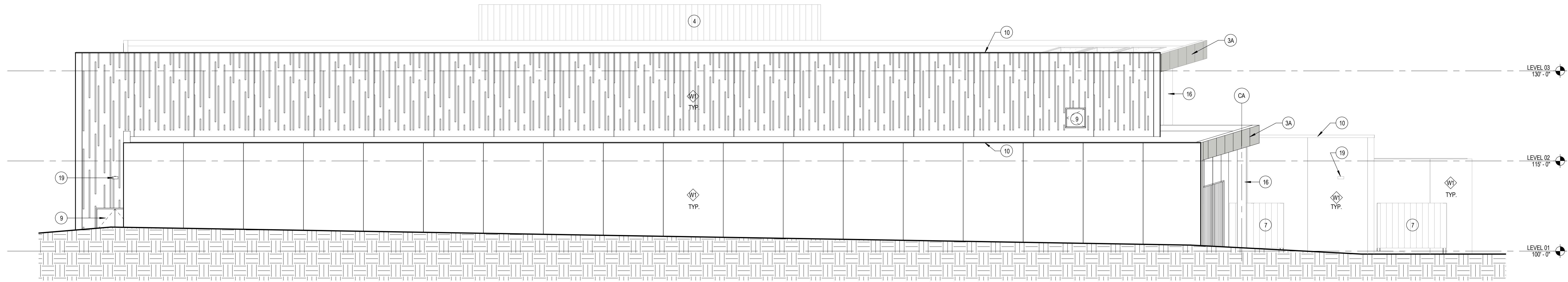
I hereby certify that this plan, specification, or report was prepared by me or under my direct supervision and that I am a duly licensed architect under the laws of the State of North Dakota.
Thomas E. Gieseler
THOMAS E. GIESELER
Licenses No. 1285 Date: 02/20/15

DLR Group
Architecture Engineering Planning Interiors
© 2015, DLR Group Inc. a Minnesota corporation. ALL RIGHTS RESERVED





1 EAST ELEVATION
AS.3 SCALE: 1/8" = 1'-0"



2 WEST ELEVATION
AS.3 SCALE: 1/8" = 1'-0"

GENERAL NOTES:

- A. SEE PRECAST PANEL ELEVATIONS FOR PANEL DIMENSIONS, JOINT LOCATIONS, REVEAL LOCATIONS, AND FINISH DESIGNATIONS
- B. PENETRATIONS AND PRECAST MOUNTED DEVICES INDICATED IN THE PRECAST ELEVATIONS REPRESENT THE DESIGN INTENT. COORDINATE FINAL MECHANICAL, PLUMBING, ELECTRICAL, AND TECHNOLOGY PENETRATIONS AND DEVICES IN THE FIELD.
- C. ALL GLASS TO BE TEMPERED, UNLESS NOTED OTHERWISE
- D. SEE SHEET A7.0 FOR WALL TYPE DESCRIPTIONS
- E. ALL PRECAST REVEALS TO BE 2" WIDE X 1/2" DEEP, UNLESS NOTED OTHERWISE

KEYED NOTES:

- 1A. DARK PRECAST CONCRETE
PC1. ACID ETCHED
PC2. SAND BLASTED
- 1B. EXTRA DARK PRECAST CONCRETE
PC3. SAND BLASTED
- 2. LIGHT PRECAST CONCRETE
PC4. ACID ETCHED
PC5. SAND BLASTED
- 3. PREFINISHED COMPOSITE METAL PANEL SYSTEM
3A. CHAMPAGNE METALIC FINISH
3B. GRAY VELVET METALIC FINISH
- 4. FORMED METAL SCREEN WALL PANEL
CENTRIA PROFILE SERIES IW-40A, SILVER METALIC FINISH
- 5. DIRECT APPLIED EXTERIOR FINISH SYSTEM SW6076, DEFS1
- 6. INSULATED GLAZING UNIT WITH INSULATED TRANSLUCENT SANDWICH PANEL SYSTEM

- 7. PRE-FINISHED ALUMINUM FENCE AND GATE
- 8. CLEAR ANODIZED ALUMINUM ENTRY DOORS
- 9. HOLLOW METAL DOOR AND FRAME, PAINTED TO MATCH ADJACENT PRECAST PANEL
- 10. PRE-FINISHED ALUMINUM ROOF EDGE, CHAMPAGNE METALIC FINISH
- 11. CLEAR ANODIZED ALUMINUM ARCHITECTURAL LOUVER
- 12. 1/2" PIN MOUNTED OUT METAL LETTERS, ARIAL, DARK BRONZE ANODIZED FINISH
- 13. PRE-FINISHED INSULATED OVERHEAD GARAGE DOOR
- 14. RECESSED KONX BOX, RECESSED, MODEL 3200
- 15. INTERCOM PANEL
- 16. GLASS FIBER REINFORCED CONCRETE COLUMN ENCLOSURE

- 17. ROOFTOP MECHANICAL UNITS BEYOND
- 18. CAST IN PLACE CONCRETE BENCH
- 19. BUILDING MOUNTED LIGHT FIXTURE, BOTTOM OF FIXTURE AT 12'-0" ABOVE FINISHED FIRST FLOOR, UNLESS NOTED OTHERWISE
- 20. 1" INSULATED SPANDREL GLASS
- 21. PAINTED PRECAST CONCRETE FINISH. SEE FINISH PLANS
- 22. 8" PRECAST CONCRETE FIREWALL
- 23. 8" PRECAST DEMISING WALL

LEGEND NOTES

ISSUED FOR CONSTRUCTION

Revisions
1 09/15 09/15

2675 21st Street West
Dickinson, North Dakota 58601

EXTERIOR ELEVATIONS
Dickinson Middle School

A5.3
21-14-005-00
1/09/15

I hereby certify that this plan, specification, or report was prepared by me or under my direct supervision and that I am a duly licensed professional engineer in the State of North Dakota.
Thomas E. Grier
THOMAS E. GRIER
Licenses No. 5285 Date: 06/2015

DLR Group
Architecture Engineering Planning Interiors
© 2015, DLR Group, Inc. All Rights Reserved